

# VO-350/355-MHI

UNIMOG U-500 WB 3900 (15 T)



**TIME**

# VO-350/355-MHI

## SPECIFICATION

	VO-350-MHI	VO-355-MHI
Working height	17,10 m	19,40 m
Platform height	15,70 m	17,10 m
Max. working outreach	13,30 m*	15,00 m*
Max. bucket capacity	2x136 kg	2x136 kg
Flyboom	NO	NO
Minimum GVW of the vehicle	15000 kg	15000 kg

\* Depending on vehicle

## STANDARD

- 69 KV insulation
- Permanent testband
- Lower boom Insert
- Overcenter boom articulation
- 2x1-man fiberglass buckets 24X30
- Radial outriggers Heavy Duty

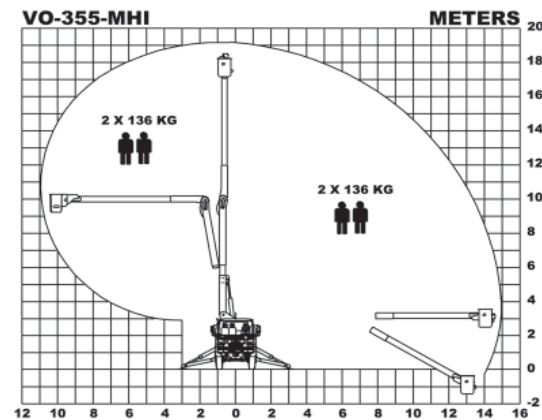
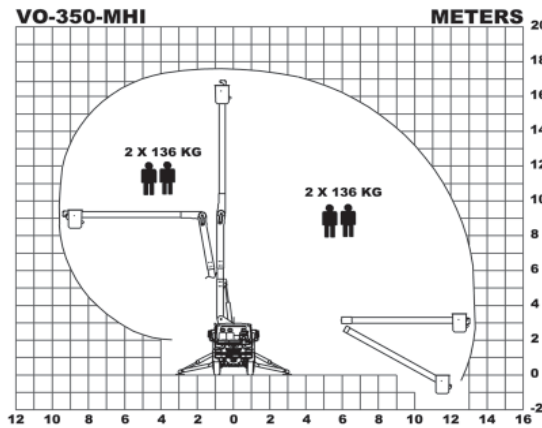
## OPTIONS

- 138 KV insulation Cat A
- Leakaged monitoring system
- Testband shield

## OPTIONS

- Coronaring
- 2-man fiberglass bucket 24X42
- 2 BUCKET LINERS 24X30
- Radial outriggers Medium duty
- Aluminium toolboxes
- Fiberbody toolboxes
- Grounding cable
- Protective cover for insulated boomparts

## NOTE



VO-350/355-MHI//UNIMOG/2007-04/EN



EXPORT A/S  
 SØNDERVANG 3 - DK-9640 FARSØ  
 PHONE +45 9863 2433 - FAX +45 9863 2483  
 SALES@TIME-EXPORT.DK - WWW.VERSALIFT.DK