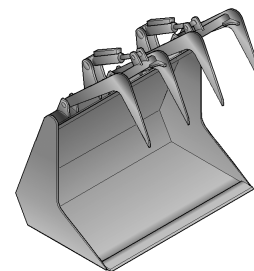


I DOTAZIONE STANDARD


PINZA INDUSTRIALE con numero 2 mordenti superiori indipendenti idraulici, tubazioni in gomma per alimentazione circuito idraulico, kit di attacco universale per Skid - Steer Loader.

GB STANDARD EQUIPMENT


INDUSTRIAL PLIERS with 2 independents hydraulic superior bitings, rubber pipes for hydraulic circuit, universal attack kit for Skid - Steer Loader.




PI 125

		CODICE CODE	PREZZO PRICE
BOB - CAT S100 KOMATSU SK510 GEHL SL3840 MUSTANG 2026 THOMAS T105 NEUSON 501S EUROCOMACH ESK130 CAMS LIBRA 635 	LARGHEZZA WIDTH	mm 1250	125.PI.100
	PESO WEIGHT	Kg 240	

PI 140

		CODICE CODE	PREZZO PRICE
NEW HOLLAND LS140 GEHL SL3840 - SL4240 JCB-ROBOT 160 MUSTANG 2026 - 2041 THOMAS T105 	LARGHEZZA WIDTH	mm 1400	140.PI.100
	PESO WEIGHT	Kg 275	


PI 155

		CODICE CODE	PREZZO PRICE
CAT 216B - 226B - 232B BOB - CAT S130 - S150 - S160 KOMATSU SK714 NEW HOLLAND LS150 GEHL SL4240 JCB-ROBOT 160 - 170 - 1CX CASE 410 - 420 MUSTANG 2041 - 2044 - 2054 THOMAS T153 NEUSON 701S DOOSAN 430 - 440 TAKEUCHI TL120 EUROCOMACH ESK150.4 CAMS LIBRA 755 	LARGHEZZA WIDTH	mm 1550	155.PI.100
	PESO WEIGHT	Kg 300	


PI 168

		CODICE CODE	PREZZO PRICE
CAT 236B - 242B - 246B - 247B - 248B - 257B BOB - CAT S150 - S160 - S175 - S185 - T190 KOMATSU SK815 - SK818 - SK820 - CK20 - CK25 NEW HOLLAND LS160 - LS170 GEHL SL4640 - SL4840 JCB-ROBOT T180 CASE 430 - 440 MUSTANG 2076 DOOSAN 440 - 450 - 460 TAKEUCHI TL130 EUROCOMACH ETL160.4 CAMS LIBRA 865 - T865 	LARGHEZZA WIDTH	mm 1680	168.PI.100
	PESO WEIGHT	Kg 320	

PI 185

		CODICE CODE	PREZZO PRICE
CAT 247B - 248B - 257B - 262B - 268B - 277B BOB - CAT S220 - S250 - S300 KOMATSU SK818 - SK820 - SK1020 - SK1026 - CK20 - CK25 NEW HOLLAND L175 - C175 - LS180B - LS185B GEHL SL5640 - SL6640 JCB-ROBOT 190 - T190 - 1110 CASE 435 - 445 - 440 CT THOMAS T175 - T205 - T255 NEUSON 901S DOOSAN 460 TAKEUCHI TL140 CAMS LIBRA 985 	LARGHEZZA WIDTH	mm 1850	185.PI.100
	PESO WEIGHT	Kg 350	

PI 205

		CODICE CODE	PREZZO PRICE
CAT 277B - 287B - 297C BOB - CAT T250 - T300 KOMATSU SK1020 - SK1026 - CK30 - CK35 NEW HOLLAND C185 GEHL 7810 JCB-ROBOT T1110 MUSTANG 2109 NEUSON 1101C TAKEUCHI TL140 - TL150 	LARGHEZZA WIDTH	mm 2050	205.PI.100
	PESO WEIGHT	Kg 495	

(1) Per minipale con piastra di attacco non universale : +€180,00
For skid-steer loader with attack plate not universal : + €180,00