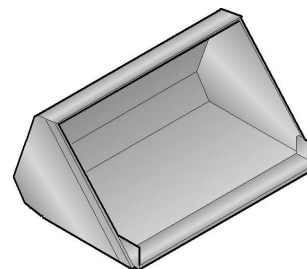



**I** DOTAZIONE STANDARD

**BENNA STANDARD** con attacco universale per Skid - Steer Loader.


**GB** STANDARD EQUIPMENT

*BUCKET STANDARD with universal attack for Skid - Steer Loader.*


**BS 125**

				CODICE CODE	PREZZO PRICE
BOB - CAT S100 KOMATSU SK510 GEHL SL3840 MUSTANG 2026 THOMAS T105 NEUSON 501S EUROCOMACH ESK130 CAMS LIBRA 635	 UNIVERSAL PLATE	<b>LARGHEZZA</b> WIDTH	mm 1250	125.BS.100	(1) € 1.000,00
		<b>PESO</b> WEIGHT	Kg 105		
		<b>CAPACITA'</b> CAPACITY	m <sup>3</sup> 0,22		


**BS 140**

				CODICE CODE	PREZZO PRICE
NEW HOLLAND LS140 GEHL SL3840 - SL4240 JCB-ROBOT 160 MUSTANG 2026 - 2041 THOMAS T105	 UNIVERSAL PLATE	<b>LARGHEZZA</b> WIDTH	mm 1400	140.BS.100	(1) € 1.100,00
		<b>PESO</b> WEIGHT	Kg 140		
		<b>CAPACITA'</b> CAPACITY	m <sup>3</sup> 0,27		


**BS 155**

				CODICE CODE	PREZZO PRICE
CAT 216B - 226B - 232B BOB - CAT S130 - S150 - S160 KOMATSU SK714 NEW HOLLAND LS150 GEHL SL4240 JCB-ROBOT 160 - 170 - 1CX CASE 410 - 420 MUSTANG 2041 - 2044 - 2054 THOMAS T153 NEUSON 701S	 UNIVERSAL PLATE	<b>LARGHEZZA</b> WIDTH	mm 1550	155.BS.100	(1) € 1.200,00
		<b>PESO</b> WEIGHT	Kg 155		
		<b>CAPACITA'</b> CAPACITY	m <sup>3</sup> 0,32		


**BS 168**

				CODICE CODE	PREZZO PRICE
CAT 236B - 242B - 246B - 247B - 248B - 257B BOB - CAT S150 - S160 - S175 - S185 - T190 KOMATSU SK815 - SK818 - SK820 - CK20 - CK25 NEW HOLLAND LS160 - LS170 GEHL SL4640 - SL4840 JCB-ROBOT T180 CASE 430 - 440	 UNIVERSAL PLATE	<b>LARGHEZZA</b> WIDTH	mm 1680	168.BS.100	(1) € 1.300,00
		<b>PESO</b> WEIGHT	Kg 170		
		<b>CAPACITA'</b> CAPACITY	m <sup>3</sup> 0,40		

**BS 185**

				CODICE CODE	PREZZO PRICE
CAT 247B - 248B - 257B - 262B - 268B - 277B BOB - CAT S220 - S250 - S300 KOMATSU SK818 - SK820 - SK1020 - SK1026 - CK20 - CK25 NEW HOLLAND L175 - C175 - LS180B - LS185B GEHL SL5640 - SL6640 JCB-ROBOT 190 - T190 - 1110 CASE 435 - 445 - 440 CT	 UNIVERSAL PLATE	<b>LARGHEZZA</b> WIDTH	mm 1850	185.BS.100	(1) € 1.500,00
		<b>PESO</b> WEIGHT	Kg 200		
		<b>CAPACITA'</b> CAPACITY	m <sup>3</sup> 0,44		

**BS 205**

				CODICE CODE	PREZZO PRICE
CAT 277B - 287B - 297C BOB - CAT T250 - T300 KOMATSU SK1020 - SK1026 - CK30 - CK35 NEW HOLLAND C185 GEHL 7810 JCB-ROBOT T1110 MUSTANG 2109 NEUSON 1101C TAKEUCHI TL140 - TL150	 UNIVERSAL PLATE	<b>LARGHEZZA</b> WIDTH	mm 2050	205.BS.100	(1) € 1.800,00
		<b>PESO</b> WEIGHT	Kg 260		
		<b>CAPACITA'</b> CAPACITY	m <sup>3</sup> 0,54		

**(1)** Per minipale con piastra di attacco non universale : +€180,00  
 For skid-steer loader with attack plate not universal : + €180,00

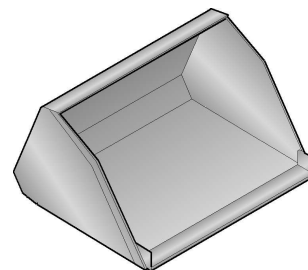
**N.B.** Serie denti per benna vedi pag. 36  
 Teeth kit for buckets pag. 36

**I DOTAZIONE STANDARD**

**BENNA con attacco universale per Skid - Steer Loader.**  
Grande capacità di carico per materiali con peso specifico basso.

**GB STANDARD EQUIPMENT**

*BUCKET with universal attack for Skid - Steer Loader. Big capacity of loading for material with low specific weight.*



**BE 125**

BOB - CAT S100 KOMATSU SK510 GEHL SL3840 MUSTANG 2026 THOMAS T105 NEUSON 501S EUROCOMACH ESK130 CAMS LIBRA 635	UNIVERSAL PLATE	<b>LARGHEZZA</b> WIDTH	mm 1250	CODICE CODE 125.BE.100	PREZZO PRICE (1) € 1.400,00
		<b>PESO</b> WEIGHT	Kg 150		
		<b>CAPACITA'</b> CAPACITY	m <sup>3</sup> 0,32		

**BE 140**

NEW HOLLAND LS140 GEHL SL3840 - SL4240 JCB-ROBOT 160 MUSTANG 2026 - 2041 THOMAS T105	UNIVERSAL PLATE	<b>LARGHEZZA</b> WIDTH	mm 1400	CODICE CODE 140.BE.100	PREZZO PRICE (1) € 1.500,00
		<b>PESO</b> WEIGHT	Kg 195		
		<b>CAPACITA'</b> CAPACITY	m <sup>3</sup> 0,38		

**BE 155**

CAT 216B - 226B - 232B BOB - CAT S130 - S150 - S160 KOMATSU SK714 NEW HOLLAND LS150 GEHL SL4240 JCB-ROBOT 160 - 170 - 1CX CASE 410 - 420 MUSTANG 2041 - 2044 - 2054 THOMAS T153 NEUSON 701S	DOOSAN 430 - 440 TAKEUCHI TL120 EUROCOMACH ESK150.4 CAMS LIBRA 755	UNIVERSAL PLATE	<b>LARGHEZZA</b> WIDTH	mm 1550	CODICE CODE 155.BE.100	PREZZO PRICE (1) € 1.600,00
			<b>PESO</b> WEIGHT	Kg 210		
			<b>CAPACITA'</b> CAPACITY	m <sup>3</sup> 0,44		

**BE 168**

CAT 236B - 242B - 246B - 247B - 248B - 257B BOB - CAT S150 - S160 - S175 - S185 - T190 KOMATSU SK815 - SK818 - SK820 - CK20 - CK25 NEW HOLLAND LS160 - LS170 GEHL SL4640 - SL4840 JCB-ROBOT T180 CASE 430 - 440	MUSTANG 2076 DOOSAN 440 - 450 - 460 TAKEUCHI TL130 EUROCOMACH ETL160.4 CAMS LIBRA 865 - T865	UNIVERSAL PLATE	<b>LARGHEZZA</b> WIDTH	mm 1680	CODICE CODE 168.BE.100	PREZZO PRICE (1) € 1.700,00
			<b>PESO</b> WEIGHT	Kg 225		
			<b>CAPACITA'</b> CAPACITY	m <sup>3</sup> 0,54		

**BE 185**

CAT 247B - 248B - 257B - 262B - 268B - 277B BOB - CAT S220 - S250 - S300 KOMATSU SK818 - SK820 - SK1020 - SK1026 - CK20 - CK25 NEW HOLLAND L175 - C175 - LS180B - LS185B GEHL SL5640 - SL6640 JCB-ROBOT 190 - T190 - 1110 CASE 435 - 445 - 440 CT	THOMAS T175 - T205 - T255 NEUSON 901S DOOSAN 460 TAKEUCHI TL140 CAMS LIBRA 985	UNIVERSAL PLATE	<b>LARGHEZZA</b> WIDTH	mm 1850	CODICE CODE 185.BE.100	PREZZO PRICE (1) € 1.900,00
			<b>PESO</b> WEIGHT	Kg 270		
			<b>CAPACITA'</b> CAPACITY	m <sup>3</sup> 0,60		

**BE 205**

CAT 277B - 287B - 297C BOB - CAT T250 - T300 KOMATSU SK1020 - SK1026 - CK30 - CK35 NEW HOLLAND C185 GEHL 7810 JCB-ROBOT T1110 MUSTANG 2109 NEUSON 1101C TAKEUCHI TL140 - TL150	UNIVERSAL PLATE	<b>LARGHEZZA</b> WIDTH	mm 2050	CODICE CODE 205.BE.100	PREZZO PRICE (1) € 2.200,00
		<b>PESO</b> WEIGHT	Kg 330		
		<b>CAPACITA'</b> CAPACITY	m <sup>3</sup> 0,70		

(1) Per minipale con piastra di attacco non universale : +€180,00  
 For skid-steer loader with attack plate not universal : + €180,00

N.B. Serie denti per benna vedi pag. 36  
 Teeth kit for buckets pag. 36